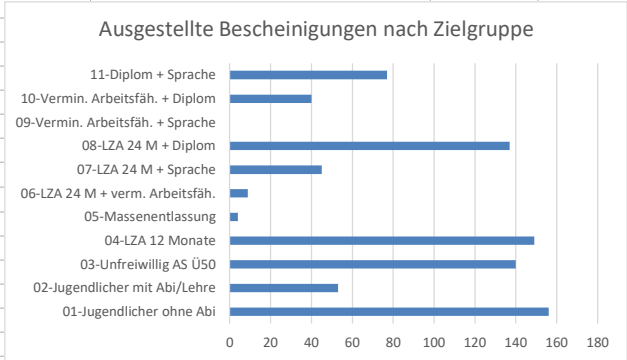


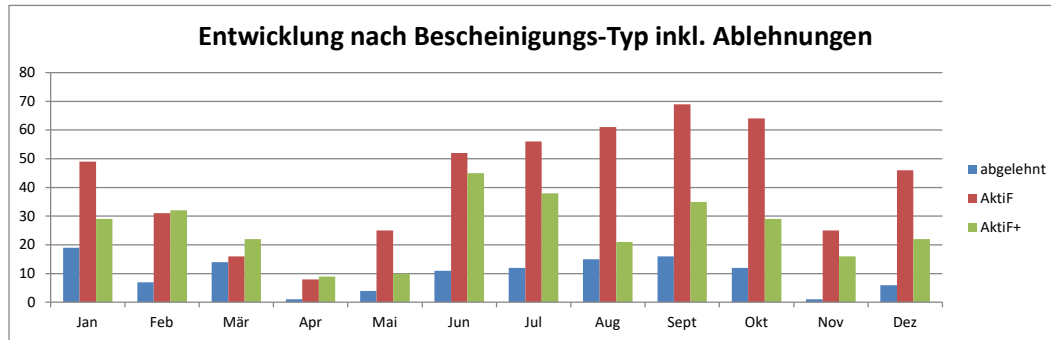
Anhang Nr.1 Statistiken des Arbeitsamts zu den Bescheinigungen 2020

Total							
Anträge				Bescheinigungen			
abgelehnt	118	12,72%				allgemein	innerhalb
Aktif	502	54,09%	62%	01-Jugendlicher ohne Abi	156	19,26%	31,08%
AktiF+	308	33,19%	38%	02-Jugendlicher mit Abi/Lehre	53	6,54%	10,56%
	928		810	03-Unfreiwillig AS Ü50	140	17,28%	27,89%
				04-LZA 12 Monate	149	18,40%	29,68%
				05-Massentlassung	4	0,49%	502 0,80%
				06-LZA 24 M + verm. Arbeitsfäh.	9	1,11%	2,92%
				07-LZA 24 M + Sprache	45	5,56%	14,61%
				08-LZA 24 M + Diplom	137	16,91%	44,48%
				09-Vermin. Arbeitsfäh. + Sprache	0	0,00%	0,00%
				10-Vermin. Arbeitsfäh. + Diplom	40	4,94%	12,99%
				11-Diplom + Sprache	77	9,51%	308 25,00%
					810	100,00%	
				bei allen			
				VH niedrig + anderes VH	50,62%		
				LZ A + ander	41,98%		
				vermind AF	6,05%		
				Sprache	15,06%		
Kontakte:				nur bei AktiF +			
Telefon	566	60%		VH niedrig + anderes VH	82,47%		
Brief/Mail	290	31%		LZ A + ander	62,01%		
anwesend	91	10%		vermind AF	12,99%		
	947			Sprache	39,61%		
Herkunft Antrag							
E-Mail	93	10,02%					
intern	734	79,09%					
Partner	21	2,26%					
Post	80	8,62%					
	928	100,00%					
Ablehnungsgrund							
Antrag ≠ komp	2	2%					
Frist ≠	7	6%					
Bedingungen ≠	94	80%					
≠ AS	15	13%					
	118						

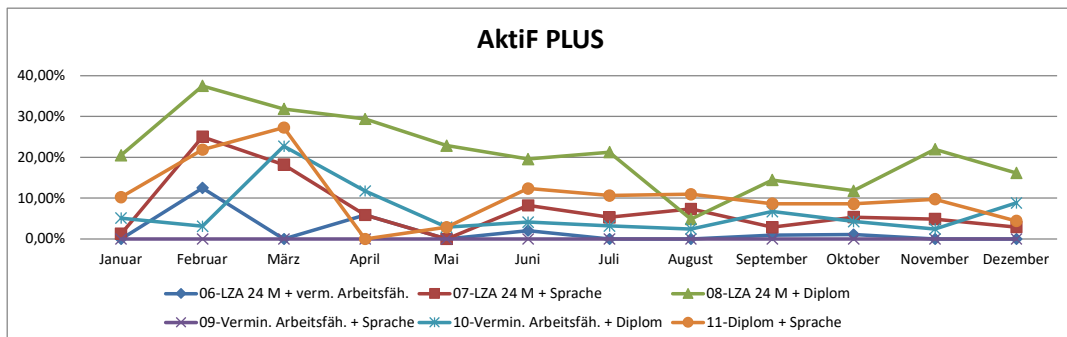
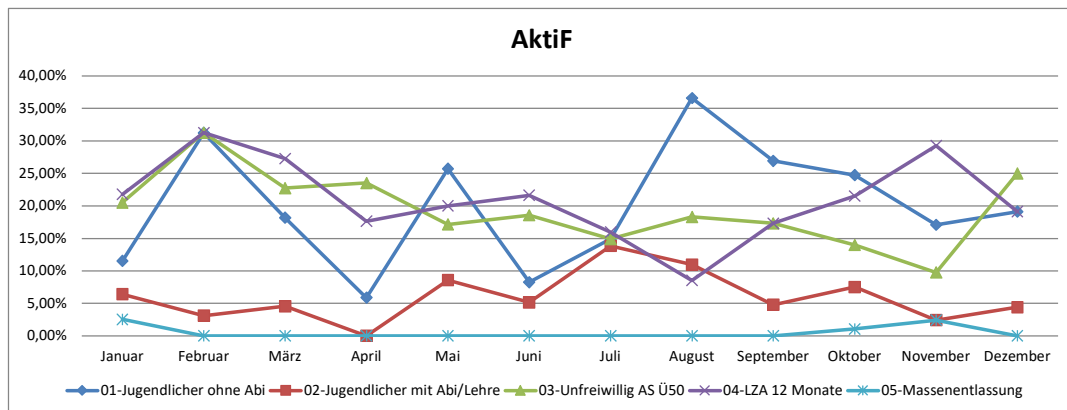


	Jan	Feb	Mär	Apr	Mai	Jun	Jul	Aug	Sept	Okt	Nov	Dez	Durchschnitt	
abgelehnt	19	7	14	1	4	11	12	15	16	12	1	6	9,83	12,72%
AktiF	49	31	16	8	25	52	56	61	69	64	25	46	41,83	54,09%
AktiF+	29	32	22	9	10	45	38	21	35	29	16	22	25,67	33,19%
Total Anträge	97	70	52	18	39	108	106	97	120	105	42	74	77,33	100,00%

Total ausgestellte Bescheinigungen 78 63 38 17 35 97 94 82 104 93 41 68



	Januar	Februar	März	April	Mai	Juni	Juli	August	September	Oktober	November	Dezember	Ø
01-Jugendlicher ohne Abi	11,54%	31,25%	18,18%	5,88%	25,71%	8,25%	14,89%	36,59%	26,92%	24,73%	17,07%	19,12%	20,01%
02-Jugendlicher mit Abi/Lehre	6,41%	3,13%	4,55%	0,00%	8,57%	5,15%	13,83%	10,98%	4,81%	7,53%	2,44%	4,41%	5,98%
03-Unfreiwillig AS Ü50	20,51%	31,25%	22,73%	23,53%	17,14%	18,56%	14,89%	18,29%	17,31%	13,98%	9,76%	25,00%	19,41%
04-LZA 12 Monate	21,79%	31,25%	27,27%	17,65%	20,00%	21,65%	15,96%	8,54%	17,31%	21,51%	29,27%	19,12%	20,94%
05-Massentlassung	2,56%	0,00%	0,00%	0,00%	0,00%	0,00%	0,00%	0,00%	0,00%	1,08%	2,44%	0,00%	0,51%
06-LZA 24 M + verm. Arbeitsföh.	0,00%	12,50%	0,00%	5,88%	0,00%	2,06%	0,00%	0,00%	0,96%	1,08%	0,00%	0,00%	1,87%
07-LZA 24 M + Sprache	1,28%	25,00%	18,18%	5,88%	0,00%	8,25%	5,32%	7,32%	2,88%	5,38%	4,88%	2,94%	7,28%
08-LZA 24 M + Diplom	20,51%	37,50%	31,82%	29,41%	22,86%	19,59%	21,28%	4,88%	14,42%	11,83%	21,95%	16,18%	21,02%
09-Vermin. Arbeitsföh. + Sprache	0,00%	0,00%	0,00%	0,00%	0,00%	0,00%	0,00%	0,00%	0,00%	0,00%	0,00%	0,00%	0,00%
10-Vermin. Arbeitsföh. + Diplom	5,13%	3,13%	22,73%	11,76%	2,86%	4,12%	3,19%	2,44%	6,73%	4,30%	2,44%	8,82%	6,47%
11-Diplom + Sprache	10,26%	21,88%	27,27%	0,00%	2,86%	12,37%	10,64%	10,98%	8,65%	8,60%	9,76%	4,41%	10,64%



Vergleich Vorjahr

	Jan	Feb	Mär	Apr	Mai	Jun	Jul	Aug	Sept	Okt	Nov	Dez	
Anträge 2019	134	126	139	129	110	79	95	108	118	100	69	71	1278
Anträge 2020	97	70	52	18	39	108	106	97	120	105	42	74	928
Total	231	196	191	147	149	187	201	205	238	205	111	145	2206

